



# Farm Retirement AUCTION

530 Hazen Bay Road, Hazen, ND 58545. \*Please note, does not pin accurately on GPS, follow directions. \* From the intersection of ND Hwy. 200 and County Rd. 27 in Hazen, ND, approx. 13-1/2 miles north on County Rd. 27, 3/8 miles east

**AUCTIONER'S NOTE:** Equipment has been stored inside with excellent maintenance. Most pieces were purchased new. Major equipment begins selling at 10:30 AM. Live online bidding available on major equipment.

**PREVIEW:** June 16 – June 22 from 8AM – 5PM  
**LOADOUT:** All items to be removed within one week following auction from 8AM – 5PM.

**WEDNESDAY, JUNE 23 | 10AM<sup>2021</sup>**



## TRACTORS

**2018 John Deere 8370RT**, premium CommandView III cab, IVT, wide stance, 5 hyd., power beyond, return flow, 60 gal. pump, 3 pt., quick hitch, 1000 PTO, rear 3 pt. controls, integrated auto steer, 10" display, 4600 processor, SF1, Swath Control, power mirrors, front suitcase weights, LED lights, Camso deep lug 18" tracks, 853 actual hrs., PowerGard warranty July 26, 2022 or 2,500 hrs., S/N1RW8370RLJD918453

**2015 John Deere 9570R**, premium CommandView III cab, active seat, buddy seat, powershift, front axle susp., 115 gal. twin high flow pump, 5 hyd. return flow, power beyond, diff lock, integrated auto steer, 2630 armrest display w/SF2 & section control, LED lights, power mirrors, pull through cable, full weight pkg., HD Gudgeon bearings, Michelin 800/70R38 metric duals, 2,095 hrs., PowerGard warranty April 2022 or 3,000 hrs., No transfer fee, S/N1RW9570RKFP016639

**2016 John Deere 6155R**, MFWD, premium cab, IVT, cab susp., front triple link susp., 4 hyd., 3 pt., quick hitch, diff lock, 540/1000 PTO, integrated auto steer, 10" armrest display, 4600 processor, John Deere 640R self-leveling loader w/5-tine grapple, 3-function joystick, 98" bucket, power mirrors, premium roof light pkg., rear weights, Firestone 420/85R28 front tires, 480/80R42 rear tires, 1,085 hrs., single owner, PowerGard warranty Sept. 2023 or 1,500 hrs., S/N1RW6155RHGD025512

**2015 John Deere 9570R**, premium CommandView III cab, active seat, buddy seat, powershift, front axle susp., 115 gal. twin high flow pump, 5 hyd. return flow, power beyond, diff lock, integrated auto steer, 2630 armrest display w/SF2 & section control, LED lights, power mirrors, pull through cable, full weight pkg., HD Gudgeon bearings, Michelin 800/70R38 metric duals, 2,095 hrs., PowerGard warranty April 2022 or 3,000 hrs., No transfer fee, S/N1RW9570RKFP016639

**2016 John Deere 6155R**, MFWD, premium cab, IVT, cab susp., front triple link susp., 4 hyd., 3 pt., quick hitch, diff lock, 540/1000 PTO, integrated auto steer, 10" armrest display, 4600 processor, John Deere 640R self-leveling loader w/5-tine grapple, 3-function joystick, 98" bucket, power mirrors, premium roof light pkg., rear weights, Firestone 420/85R28 front tires, 480/80R42 rear tires, 1,085 hrs., single owner, PowerGard warranty Sept. 2023 or 1,500 hrs., S/N1RW6155RHGD025512

## WHEEL LOADER

**2005 Caterpillar 928G wheel loader**, CAH, auto shift, 4 spd., ride control, joystick, 2-1/2 yd. bucket, bolt-on cutting edge, New 20.5-25 front tires & fenders, 4,959 actual hrs., Butler service records available, S/NCAT0928GLDJD00392

## SKID STEER LOADER & ATTACHMENTS

**2020 John Deere 324G skid steer loader**, CAH, ISO controls, 2 spd., aux. hyd., power quick tach, rear camera, rear weight pkg., Work Site Pro 72" bucket, bolt-on edges, Galaxy 12-16.5 Super Wall grip tires, 89 hrs., single owner, S/NIT0324GKTLJ371627

**Virnig snow bucket**, 96" New bolt-on cutting edge

**Virnig rock bucket**, 78"

**Pallet forks**, 48"

## GPS EQUIPMENT

**John Deere 2630 display**, SF2, Section Control, 2,278 hrs., S/NPCGU2UG518799

**John Deere 6000 receiver**, SF1, SF2 ready

**John Deere StarFire 6000 receiver**, SF1

**John Deere 3000 receiver**, SF1, SF2 ready, S/NPCGT3TA335333

## HARVEST EQUIPMENT

**2010 New Holland CR9070**, deluxe cab, leather, Terrain

Tracer, twin rotor, integrated IntelliSteer, 600 display,

rock trap, chopper, hopper ext., long unloading

auger, 650/R38 straddle duals, 1,997 sep.

hrs., 2,575 engine hrs., New sieves &

chopper, field ready, S/NY9G113129

**2012 MacDon FD70 flex draper**, 35', flip reel, fore/aft, CWS wind bar, slow spd. transport, mounts Case-IH New Holland, New drapers & center rebuild, S/N222786

**Case-IH 8220 pull-type swather**, 25' bat reel, auto fold, 540 PTO, S/NCFH0065031

## GRAIN CART

**1998 Killbros 1800 grain cart**, 950 bu., 1000 PTO, scale, roll tarp, 30.5-32 single tires, needs flighting, S/ND-21-50-122

## AIR SEEDER

**2015 John Deere 1895 air seeder**, 43-1/2', 10"-20" space, double shoot, mid-row, NH3 Super Cooler, full run monitor, MudSmith wheels across, section control w/John Deere 1910 commodity cart, 550 bu., 3-compartment (200/150/200), vari-rate, section control, hyd. remote conveyor, Torpedo hyd. winch, cameras, LED lights, front walking tandems, yellow/green/black rollers, 650/85R38 hub duals, 37,824 acres, New discs & seed firmers, cart S/N1A1910HPEJ760232, seeder S/N1A1895XPEH760126

## PLANTER

**2015 Great Plains Yield Pro twin row planter**, 16/32 row, 82 bu. central fill, vari-rate, section control, spring down pressure, row cleaners, cutting coulters, 400 gal. in-furrow liquid ground drive, hyd. markers, Redball metering, drawbar or 2 pt. hitch, Dickey John monitor, canola/soybean/corn discs, 380/90R46 rear tires, S/NGP-B1141F

## TILLAGE EQUIPMENT

**2017 Salford I-2100 vertical tillage**, 41', custom built 3-1/2" space, 8-wave coulters, rolling baskets, weight pkg., single pt. depth, 3-bar harrow, HD 445-22.5 walking tandems, single owner, S/N17-1141ML

**2014 Gates Coulter Disc II vertical tillage**, 40', 6" space, cushion gang, hyd. pitch adj. 0-15 degree, rolling baskets, HD carrier wheels across, single pt. depth, center shank, 2-bar harrow, HD 445/50R22.5 tires, single owner, S/N13-154-40

**John Deere cultivator**, 13', 3 pt., 3-bar harrow

## SPRAYER & SPRAY TRAILERS

**2015 John Deere R4038 self-propelled sprayer**, premium cab, 120' boom, auto boom level, 5-nozzle bodies, front & side load, 1,000 gal. SS tank, chemical eductor, dual flow meters, high flow pump, hyd. tread adj., 4600 display, John Deere 3000 receiver, SF1, wheel motor, Swath Pro, traction control, fence row nozzle capabilities, software for row finder, shields, HID lights, Firestone 380/90R46 tires & fenders, 417 spray hrs., 1,293 engine hrs., 73,586 acres, single owner, S/N1N04038RCE0006188

**1997 Strick van trailer**, 48', tandem slider, spring susp., (4) 1,650 gal. poly tanks, (2) black, (2) yellow, plumbed 2", (2) 20 gal. & (1) 30 gal. mix cones, Honda 2" pump, electric 2" reel, wired, 11R22.5 tires on steel rims

**1990 Monan single axle van trailer**, 28', spring susp., (2) 2,000 gal. poly tanks, F/S 30 gal. & 45 gal. mix cones, 2" plumbing, 2" transfer pump, 11R22.5 tires on steel rims, No Title

**2017 Wilson tandem axle aluminum hopper bottom**, 41'x96"x78", ag hopper, air ride susp., roll tarp, 2-row LED lights, 11R24.5 tires on full aluminum rims, less than 30,000 miles, single owner

**Shop-built single axle mesh deck trailer**, 9'

## SEMI TRACTORS

**2016 Kenworth T880 conventional**, 48" bunk, premium cab, leather, ISX 525 hp., 18 spd., engine brake, air ride susp., air slide 5th, disc brakes, twin aluminum fuel tanks w/temperature control heaters, rear air heat, electric mirrors, LED clearance lights, Defender grill guard, full coverage fenders, 260" WB, built for 3rd axle, New 295/75R22.5 tires on aluminum rims, 126,910 actual miles, single owner

**2000 Freightliner Classic XL**, factory day cab, Detroit 12,7L, 13 spd., engine brake, air ride, air slide 5th, aluminum fuel tank, Defender grill guard, headache rack, 220" WB, 11R22.5 tires, aluminum front/rear steel rims, 739,449 miles, New front tires, rebuilt front end, Salvage Title

**2017 Wilson tandem axle aluminum hopper bottom**, 41'x96"x78", ag hopper, air ride susp., roll tarp, 2-row LED lights, 11R24.5 tires on full aluminum rims, less than 30,000 miles, single owner

**Shop-built single axle mesh deck trailer**, 9'

**FERTILIZER & CHEMICAL EQUIPMENT**

**2019 Enduraplas twin tank cone bottom poly fertilizer trailer**, 6,000 gal., 3" plumbing, Honda WB30X1 gas motor

**2021 USC custom seed treater**, single tote, twin treater, flow meter, electronic programming

**Small seed treater**

**John Blue liquid in-furrow drop system**

**Beeline pull-type granular applicator**

**SCRAPER, BLADE & LASER EQUIPMENT**

**2015 Leon 1000 A Series hyd. push-off scraper**, 10 yd., bolt-on cutting edge, side plates, 21.5-15 flotation tires, S/N108331504

**2011 Bil Mfg. pull-type 12' box angle blade**, weight box, tandem dual carrier wheels, single owner, S/N213

**CST electronic laser**, tripod, mast, Rust Sales subscription

**OTHER EQUIPMENT**

**2018 Riteway RR900ST hyd. rockpicker**, 3-bat, hyd. swing hitch, electronic controls, backstop, flotation tires, single owner, S/N18-1608R

**2019 Schulte FX1800 pull-type mower**, hyd. fold, 1000 PTO, twin knife, safety chain, stalk jumpers, cushion rear susp., solid rubber tires, S/NC18511547809

**Accessories Unlimited AU015000 HD snowblower**, 96", 3 pt., 540 PTO, dual stage, hyd. spout control, hyd. tip, S/NT000000346

**2020 Frontier pallet forks for John Deere 640R loader**

**Canola roller**

**COLLECTIBLE TRACTOR**

**1937 Fordson 35**, steel fronts, 13-28 spoke rears, family owned, engine stuck

**LAWN/GARDEN & ATV**

**2018 John Deere X330 lawn tractor**, 20 hp. gas, hydro, 42" deep deck, 14.7 hrs.

**John Deere F725 front deck lawn tractor**, 54"

**2008 John Deere 620I Limited Edition Gator**, electric hyd. dump bed, rear power, front & rear receivers, light pkg., New tires, S/NM0HXOPA050144

**TANKS**

**TrueNorth 8,600 gal. single wall upright fuel tank**, 12", Fill-Rite 20 gpm pump, bottom manhole, vented w/gauge

**1,000 gal. fuel tank w/Gasboy pump**

**1,000 gal. LP tank**

**2017 Wilson tandem axle aluminum hopper bottom**, 41'x96"x78", ag hopper, air ride susp., roll tarp, 2-row LED lights, 11R24.5 tires on full aluminum rims, less than 30,000 miles, single owner

**Shop-built single axle mesh deck trailer**, 9'

**FERTILIZER & CHEMICAL EQUIPMENT**

**2019 Enduraplas twin tank cone bottom poly fertilizer trailer**, 6,000 gal., 3" plumbing, Honda WB30X1 gas motor

**2021 USC custom seed treater**, single tote, twin treater, flow meter, electronic programming

**Small seed treater**

**John Blue liquid in-furrow drop system**

**Beeline pull-type granular applicator**

**NH3 EQUIPMENT**

**2014 B&B Enterprises NH3 wagon**, twin 1,465 gal. tanks, rear walking tandems, rear brakes, 385/65R22.5 front tires, New hoses & relief valves good through 2026

**Duo-Lift NH3 wagon**, twin 1,450 gal. tanks, hoses & valves, 21.5-15 flotation tires, 2024 stamp date

**HOPPER BINS**

**(3) Amber Wave 4,000 bu. bins** on dual skids, manhole, no aeration, epoxy-lined

**(6) Meridian 4,000 bu. hopper bins** on dual skids, (2) with vertical tubes, 5 hp. Grain Guard 1 phase fans, epoxy-lined, and (4) with rocket tubes, Keho 5 hp. fans

**GRAIN HANDLING & AERATION EQUIPMENT**

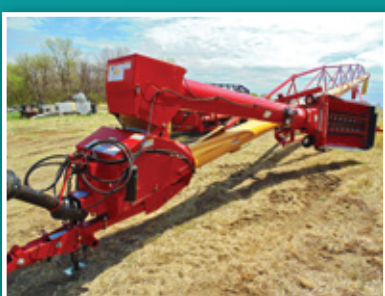
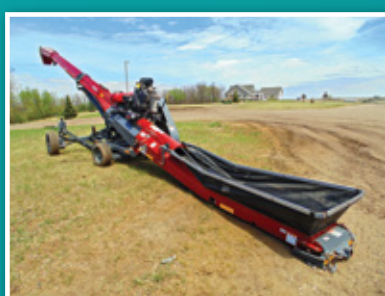
**2016 Brandt 5200EX grain vac**, 7-1/2", SS tubes, clean up pkg., 1000 PTO, hyd. fold auger, 55 hrs., single owner, S/N121020

**2011 Neco 1680 continuous flow grain dryer**, 750. bu., 5 pts. all heat, auto batch, single burner, 1 phase, moisture sensor, safety shut-downs, 1,639 hrs., S/NAA-27-0674

**2019 Westfield MKX130-84 auger**, 84"x13", mechanical swing low pro hopper, electric dual drive walker, poly spout, remote control

**Auger**, 75"x7", 10 hp. 1 phase motor

**Auger**, 45"x7", 10 hp. 1 phase motor



**701.237.9173 | SteffesGroup.com**  
 Steffes Group, Inc., 2000 Main Avenue East, West Fargo, ND 58078

TERMS: All items sold as is where is. Payment of cash or check must be made sale day before removal of items. Statements made auction day take precedence over all advertising. \$35 documentation fee applies to all titled vehicles. Titles will be mailed. Canadian buyers need a bank letter of credit to facilitate border transfer. Scott Steffes ND61, Brad Olstad ND319, Max Steffes ND999, Justin Ruth ND2019

